



Government of India
Ministry of Earth Sciences



India Meteorological Department

PRESS RELEASE

Time of issue: 1430 hours IST

Dated: 31st May, 2025

Sub: Well-marked low pressure over Meghalaya dissipated over Northeast Assam

I. Life history:

A Low Pressure Area formed over Northwest Bay of Bengal off Odisha coast in the morning (0830 hours IST) of 27th May. It lay as a Well Marked Low Pressure Area over the same region in the early morning (0530 hours IST) of 28th May 2025. It concentrated into a depression in the early morning (0530 hours IST) of 29th May over northwest Bay of Bengal off West Bengal and adjoining Bangladesh coasts. It moved nearly northwards and intensified into a deep depression over the same region in the morning (0830 hrs IST) of 29th May. Continuing to move nearly northwards, it crossed West Bengal – Bangladesh coasts between Sagar Island & Khepupara (Bangladesh) close to Raidighi (West Bengal) during noon (1030-1130 hrs IST) of 29th May. Thereafter, it moved nearly north-northeastwards across Gangetic West Bengal and western parts of Bangladesh and weakened into a depression over Bangladesh in the early morning (0530 hrs IST) of 30th May 2025. Continuing to move further north-northeastwards across north Bangladesh, it weakened into a well-marked low pressure area over Meghalaya in the evening (1730 hours IST) of 30th May 2025. It weakened further into a Low pressure area over northeast Assam and neighbourhood in the early morning (0530 hrs IST) and became less marked thereafter. However the associated upper air cyclonic circulation lay over Arunachal Pradesh and neighbourhood in the morning (0830hrs IST) of today, the 31st May, 2025.

II. Warnings:

(i) Rainfall Warning:

- Light to moderate rainfall at most places with isolated heavy to very heavy rainfall is very likely over Assam, Meghalaya, Arunachal Pradesh, Sub-Himalayan West Bengal, Sikkim, Manipur and Mizoram on 31st May.
- Light/moderate rainfall at many places with isolated heavy rainfall is very likely over Nagaland and Tripura on 31st May.

(ii) Wind warning

Strong wind speed reaching 25-35 kmph gusting to 45 kmph is very likely over Arunachal Pradesh and adjoining Manipur and northeast Assam on 31st May.

(iii) Impact Expected and Action Suggested over Northeastern states, Sub-Himalayan West Bengal and Sikkim

Impact expected:

- ❖ Breaking of tree branches. Strong wind and rain may damage plantation, horticulture and standing crops.
- ❖ Minor damage to kutcha houses/walls, huts and roads due to strong winds and heavy rain.
- ❖ Road and rail traffic may be affected due to heavy rain.
- ❖ There could be localised landslides, mudslides, landslips, water logging, inundation and flooding over low lying areas.
- ❖ Occasional reduction in visibility due to heavy rainfall.
- ❖ Surface transport and helicopter services may get affected.

Action suggested:

- ❖ People are advised to keep a watch on the weather for worsening conditions and be ready to move to safer places accordingly.
- ❖ Take safe shelters; do not take shelter under trees, as there could be lightning.
- ❖ In case of expected lightning, unplug electrical/ electronic appliances, immediately, get out of water bodies and keep away from all the objects that conduct electricity.
- ❖ Tourism and recreational activities to be regulated.
- ❖ Surface transport and helicopter services to be regulated.

III. Forecast Performance:

- ❖ First information about formation of low pressure area over North Bay of Bengal was issued in the extended range outlook issued on 15th May about 12 days ahead of formation of low pressure area over northwest Bay of Bengal on 27th May.
- ❖ The warnings were further reiterated and the extended range outlook issued on 22nd May indicated likely formation of depression over North Bay of Bengal around 29th with low probability. Actually, depression formed over northwest Bay of Bengal on 29th May.
- ❖ Since 21st May, the regular Bulletins issued by National Weather Forecasting Centre and Regional Specialized Meteorological Centre, New Delhi indicated likely formation of depression over northwest Bengal and regular red colored multi-hazards warnings were issued for the north-eastern states for 28th and 29th May.

IV. Statistics of bulletins issued:

1. Extended range outlook for formation of depression during next 2 weeks: 2.
2. Tropical weather outlook for formation of depression during next 7 days to WMO/ESCAP Panel member countries including Bangladesh and Myanmar: 8
3. Special tropical weather outlook on formation of depression to WMO/ESCAP Panel member countries including Bangladesh and Myanmar: 9

4. Severe weather forecast on daily basis for next 5 days to South Asian countries including Nepal and Bhutan: 10
5. Special message on formation of low pressure area and in association with remnant of depression over north-eastern states to disaster managers and other stakeholders: 2.
6. National bulletin for disaster managers and other stakeholders: 9.
7. Fishermen warning for entire north Indian Ocean: 14
8. Press release at National level: 10
9. Regular updates (6hourly) through SMS, Whatsapp, Facebook, Twitter
10. Regular updates (6hourly) including Press Release, special Bulletins and Impact based forecast by Area Cyclone Warning Centre, Kolkata, Cyclone Warning Centre, Bhubaneswar & Vishakhapatnam, Regional Meteorological Centre, Guwahati, Meteorological Centres Port Blair/ Itanagar/ Kohima/ Agartala/ Gangtok/ Imphal/ Aizwal/ Shillong/ Gangtok.

V. Realised Weather:

(i) Rainfall:

The system caused heavy rainfall activity over the northeastern states of India during 28th-30th leading to damage to life and property.

24 hours cumulative heavy rainfall ($\geq 7\text{cm}$) ending at 0830 hours IST of date is presented below:

29th May:

- ❖ **Odisha:** Lanjigarh (dist Kalahandi) 10; Chilika (dist Khurda) 8; Krishnaprasad (dist Puri), Ganjam (dist Ganjam), Begunia (dist Khurda), Angul (dist Angul) 7 each;
- ❖ **Assam & Meghalaya:** Kokrajhar (dist Kokrajhar), Dhupdhara ARG (dist Goalpara) 8 Each; Gharmura (dist Hailakandi), Bahalpur (dist Dhubri) 7 each;
- ❖ **Nagaland, Manipur, Mizoram & Tripura:** Chandel AWS (dist Chandel) 8;
- ❖ **Sub Himalayan West Bengal & Sikkim:** Lava (dist Darjeeling), Lava (dist Kalimpong) 7 each;

30th May:

- ❖ **Assam & Meghalaya:** Cherrapunji(rkm) (dist East Khasi Hills) 38; Mawsynram (dist East Khasi Hills) 26; Mawphlang (dist East Khasi Hills) 25; Cherrapunji (dist East Khasi Hills) 22; Williamnagar (dist East Garo Hills) 17; Mawkyrwat (dist South West Khasi Hills), Resubelpara (dist North Garo Hills) 15 each; Jowai (dist West Jaintia Hills), Bhaghmara (dist South Garo Hills), Umrangso (dist Dima Hasao) 14 each; Shillong CSO (dist East Khasi Hills), Shillong AWS (dist East Khasi Hills) 13 each; Williamnagar AWS (dist East Garo Hills), Khliehriat (dist East Jaintia Hills) 12 each;
- ❖ **Nagaland, Manipur, Mizoram & Tripura:** Sonamura (dist Sipahijala) 17; Jirania ARG (dist West Tripura) 16; Arundhutinagar (dist West Tripura), Sonamura ARG (dist Sipahijala) 14 each; Teliamura ARG (dist Khowai), Agartala AP (dist West Tripura), Khowai AWS (dist Khowai), Met Agartala AWS (dist West Tripura), Khowai

Contact: Cyclone Warning Division, Office of the Director General of Meteorology, India Meteorological Department, Ministry of Earth Sciences.

E-mail: cyclonewarningdivision@gmail.com, Website: rsmcnwdelhi.imd.gov.in

Spatial rainfall distribution: Isolated: <25%, A few: 26-50%, Many: 51-75%, Most: 76-100%

Rainfall amount (mm): Heavy rain: 64.5 – 115.5, Very heavy rain: 115.6 – 204.4, Extremely heavy rain: 204.5 or more.

(dist Khowai) 12 each; Sabroom (dist South Tripura), Budhjongnagar ARG (dist West Tripura) 11 each; Bishalgarh (dist Sipahijala), Amarpur (dist Gomati), Belonia (dist South Tripura), Sabroom AWS (dist South Tripura), Gandachara AWS (dist Dhalai), Belonia ARG (dist South Tripura), Bagafa (dist South Tripura) 9 each;

❖ **Arunachal Pradesh:** Bomdila AWS (dist West Kameng) 10; Daparijo (dist Upper Subansiri), Daporizo AWS (dist Upper Subansiri), Hawaii (dist Anjaw) 8 each;

❖ **Sub Himalayan West Bengal & Sikkim:** Kalimpong (dist Kalimpong) 8;

31st May:

❖ **Assam & Meghalaya:** Cherrapunji(rkm) (dist East Khasi Hills) 47; Cherrapunji (dist East Khasi Hills) 41; Mawsynram (dist East Khasi Hills) 40; Khliehriat (dist East Jaintia Hills) 30; Mawkyrwat (dist South West Khasi Hills) 29; Mawphlang (dist East Khasi Hills) 21; Chauldhowaghat (dist Lakhimpur) 19; Chouldhuwaghat ARG (dist Lakhimpur) 18; N.lakhimpur/Lilabari (dist Lakhimpur), Tezpur (dist Shonitpur) 17 Each; Majbat (dist Udalguri), Khanapara (dist Kamrup Metropolitan), Mazbat ARG (dist Udalguri) 16 Each; Shella (dist East Khasi Hills), Amraghat (dist Cachar) 15 Each; Jowai (dist West Jaintia Hills), Badatighat (dist Lakhimpur), Chandrapur ARG (dist Kamrup (rural)), Khetri ARG (dist Kamrup (rural)), Sonapur ARG (dist Kamrup Metropolitan) 13 Each; Bihpuria AWS (dist Lakhimpur), Numaligarh (dist Golaghat), Barpathar (dist Golaghat), Guwahati ARG (dist Kamrup Metropolitan), Panbari (dist Chirang) 12 Each; Guwahati AP (dist Kamrup Metropolitan), Dhemaaji (dist Dhemaaji), Byrnihat ARG (dist Ri Bhoi), Sualkuchi ARG (dist Kamrup (rural)), Laharighat ARG (dist Morigaon), Guwahati City AWS (dist Kamrup Metropolitan) 11 Each; Shillong CSO (dist East Khasi Hills), Goibargaon (dist Baksa), Barapani (dist Ri Bhoi), Jia Bharali N T Xing (dist Shonitpur), Guwahati AWS (dist Kamrup Metropolitan), Neamatighat (dist Jorhat), Nongstein (dist West Khasi Hills), Majuli (dist Majuli), Udaipur (dist Tinsukia), Kalakshetra ARG (dist Kamrup Metropolitan) 10 Each; Shillong AWS (dist East Khasi Hills), Dholai (dist Cachar), Khowang (dist Dibrugarh), Baithalangso (dist West Karbi Anglong), Bhumuraguri (dist Shonitpur), Tangla ARG (dist Udalguri), Hangrabari ARG (dist Kamrup Metropolitan) 9 Each; Dharamtul (dist Morigaon), Jiagaon (dist Tinsukia), Lakhimpur (dist Cachar), Tamulpur ARG (dist Baksa), Dhupdhara ARG (dist Goalpara), Hazo ARG (dist Kamrup (rural)), Bajali AWS (dist Bajali), Dhekiajuli (dist Shonitpur), Silchar (dist Cachar) 8 Each; B P Ghat (dist Sribhumi), Matijuri (dist Hailakandi), Kheronighat (dist West Karbi Anglong), A P Ghat (dist Cachar), Margherita (dist Tinsukia), Golaghat CWC (dist Golaghat), Tamulpur (dist Tamulpur), Ranganadi Nt Xing (dist Lakhimpur) 7 Each;

❖ **Sub Himalayan West Bengal & Sikkim:** Sevoke (dist Darjeeling), Buxaduar (dist Alipurduar), Hasimara (dist Alipurduar) 23 Each; Beech Tea Garden (dist Alipurduar) 21; Hilla T.e. (dist Jalpaiguri) 17; Chengmari/Diana (dist Jalpaiguri) 16; Banarhat High School (dist Jalpaiguri), Kurti T.e. (dist Jalpaiguri) 15 Each; Neora (dist Jalpaiguri), Ghatia T.e. (dist Jalpaiguri), Gurjongjhora Tea Estate (dist Jalpaiguri), Soongachi T.e. (dist Jalpaiguri), Tra Nagrakata (dist Jalpaiguri), Dima Tea Estate (dist Alipurduar) 14 Each; Ghish (dist Jalpaiguri), Indong T.e. (dist Jalpaiguri), Jiti T.e. (dist Jalpaiguri), Bhutanghat (dist Alipurduar) 13 Each; Good Hope Tea Estate (dist Jalpaiguri), Zurrantee T.e (dist Jalpaiguri), Nagarkata (dist Jalpaiguri) 12 Each; Gajoldoba (dist Jalpaiguri), Aibheel Tea Estate (dist Jalpaiguri), Diana Tea Estate (dist Jalpaiguri), Gandrapara Tea Garden (dist Jalpaiguri), Leesh

River Tea Garden (dist Jalpaiguri) 11 Each; Bhatkawa Tea Estate (dist Jalpaiguri), Chel (dist Jalpaiguri), Oodlabari Tea Estate (dist Jalpaiguri) 10 Each; Singhik (dist Mangan), Baradighi T.e. (dist Jalpaiguri), Kumlai T.e. (dist Jalpaiguri), Washabari Tea Estate (dist Jalpaiguri), Fagu Tea Estate (dist Jalpaiguri), Mangan (dist Mangan), Dalgaon Tea Estate (dist Alipurduar) 9 Each; Shipgyar (dist Mangan), Batabari T.e. (dist Jalpaiguri), Chalouni Tea Estate (dist Jalpaiguri), Damdim Tea Estate (dist Jalpaiguri), Gairkata Tea Estate (dist Jalpaiguri), Saraswatipur Tea Estate (dist Jalpaiguri) 8 Each; Bagdogra IAF (dist Darjeeling), Murti (dist Jalpaiguri), Baintgoorie T.e. (dist Jalpaiguri), Kailashpur Tea Estate (dist Jalpaiguri), Newlands Tea Garden (dist Alipurduar) 7 Each;

❖ **Nagaland, Manipur, Mizoram & Tripura:** Saiha (dist Saiha) 22; Senapati (dist Senapati) 15; Champai AWS (dist Champhai) 14; Lawngtlai (dist Lawngtlai) 12; Aizawl (dist Aizawl), Zunheboto AWS (dist Zunheboto) 9 Each; Wokha AWS (dist Wokha), Ukhrul (dist Ukhrul) 8 Each; Chottabekra (dist Imphal West), Kiphire AWS (dist Kiphire), Kolasib ARG (dist Kolasib) 7 Each;

❖ **Arunachal Pradesh:** Tezu (dist Lohit), Bomdila AWS (dist West Kameng) 18 Each; Basar AWS (dist West Siang), Basar (dist West Siang) 16 Each; Yazali (dist Lower Subansiri) 15; Naharlagun (dist Papumpara), Tezu AWS (dist Lohit) 14 Each; Miao (dist Changlang), Ziro (dist Lower Subansiri), Hawaii (dist Anjaw) 13 Each; Pasighat AP (dist East Siang) 12; Daporizo AWS (dist Upper Subansiri), Passighat AWS (dist East Siang) 11 Each; Roing (dist Lower Dibang Valley), Seppa (dist East Kameng) 10 Each; Tuting (dist Upper Siang), Daparijo (dist Upper Subansiri), Kibithu (dist Anjaw) 9 Each; Bomdila (dist West Kameng) 8; Tuting AWS (dist Upper Siang), Namsai (dist Lohit) 7 Each;

(AWS: Automatic Weather Station, ARG: Automatic Rain Gauge)

(ii) Wind

Realised Gusty Winds (KMPH) during past 24hours ending at 0830 hours IST of date:

29th May:

- ❖ **Assam & Meghalaya:** Gossaigaon 68, Kokrajhar 47, Dhubri 45, Goalpara 43,
- ❖ **Gangetic West Bengal:** Amta 46; Canning 41; Raidighi 39; Digha, Diamond Harbour 37; Sonarpur 35; Jagatballavpur, Berhampore, Kalyani, Purulia, Alipore 33; Dum Dum 31; Durgapur & Nimpith 30 each
- ❖ **Mizoram:** Saiha 42
- ❖ **Odisha:** Ranital, Mayurbhanj 43
- ❖ **Sub-Himalayan West Bengal & Sikkim:** Dhupguri 41; Mal 33; Ramshai & Malda 30 each;

30th May:

- ❖ **Assam & Meghalaya:** Kamrup 93, Goalpara 88, Bongaigaon 81, Morigaon 65, Dibrugarh 60;
- ❖ **Nagaland, Manipur, Mizoram & Tripura:** Saiha 72;

- ❖ **Gangetic West Bengal:** Barrackpore 56, Berhampore 48, Amta 39, Kolkata Airport 33, Canning 33;
- ❖ **Odisha:** Gunupur 56, Mayurbhanj 39, Cuttack 33, Jagatsinghpur 35;
- ❖ **Sub-Himalaya West Bengal & Sikkim:** Jalpaiguri 41, Dhupguri 41, Dinhata 39, Malda 37;

31st May:

- ❖ **Assam & Meghalaya:** Mawkyrwat 81, Kamrup 65, Darang 54, Mawsynram 68, Karbianglong 52, Shillong 57;
- ❖ **Nagaland, Manipur, Mizoram & Tripura:** Champhai 67, Kamjong 37;
- ❖ **Arunachal Pradesh:** Bomdila, West Kameng Dist 39;

All graphics including the observed track of the deep depression, latest satellite & radar imageries, multi-hazard warning maps and fishermen warning graphics are placed in Annexure 1.

For regular updates kindly visit www.rsmcnewdelhi.imd.gov.in and www.mausam.imd.gov.in



OBSERVED TRACK OF DEEP DEPRESSION OVER NORTHWEST BAY OF BENGAL OFF WEST BENGAL – BANGLADESH COASTS DURING 29th - 30th MAY, 2025



DATE/TIME IN UTC

IST=UTC + 0530

L: LOW PRESSURE AREA

WML: WELL MARKED LOW PRESSURE AREA

D: DEPRESSION (17-27 KT)

DD: DEEP DEPRESSION (28-33 KT)

CS: CYCLONIC STORM (34-47 KT)

SCS: SEVERE CYCLONIC STORM (48-63KT)

VSCS: VERY SEVERE CYCLONIC STORM (64-89 KT)

ESCS: EXTREMELY SEVERE CYCLONIC STORM (90-119 KT)

SuCS: SUPER CYCLONIC STORM (≥ 120 KT)

LESS THAN 34 KT

34-47 KT

≥ 48 KT

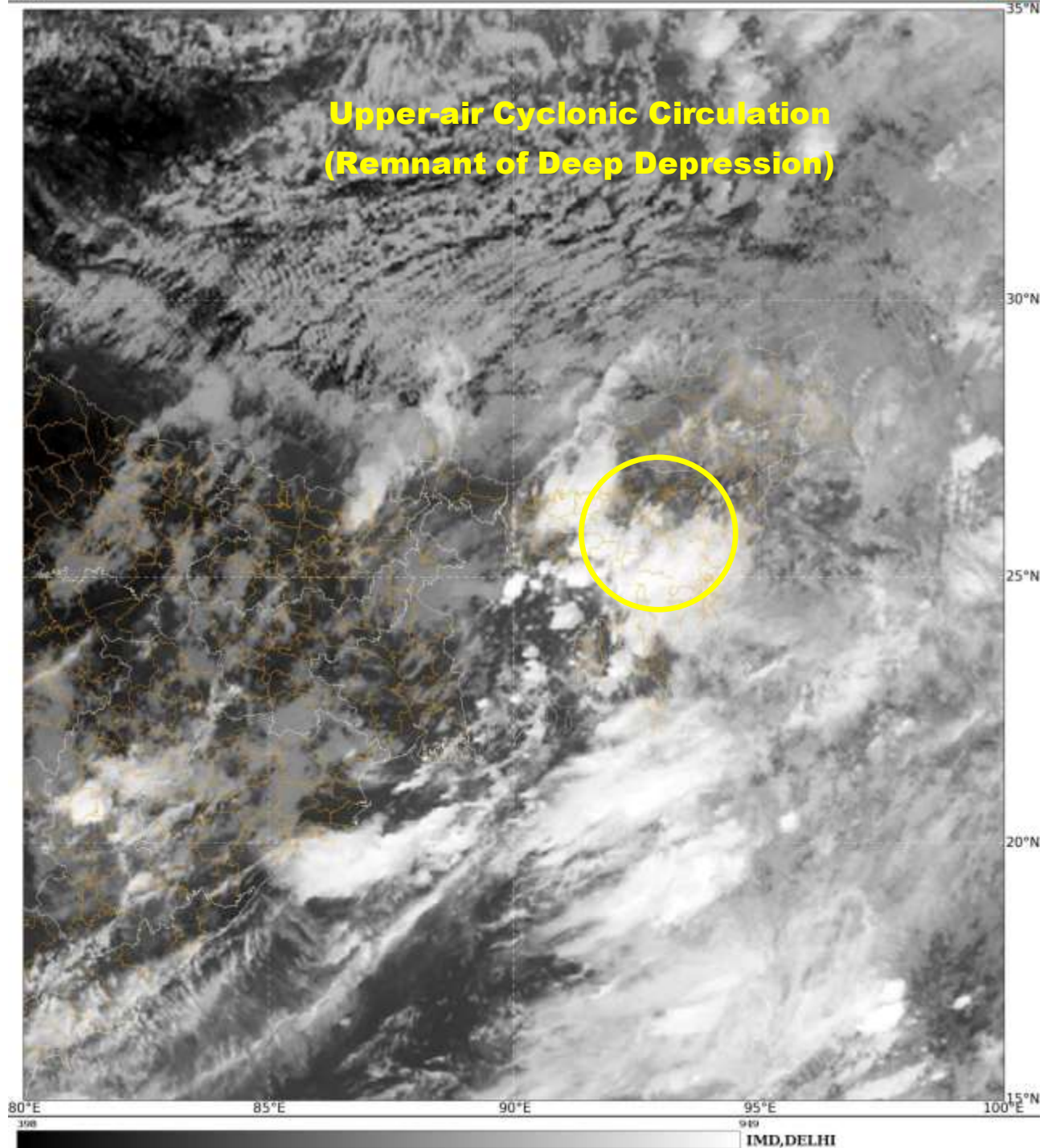
OBSERVED TRACK

FORECAST TRACK

CONE OF UNCERTAINTY

SAT : INSAT-3DR IMG
IMG_TIR1 10.8 um
NEQ

31-05-2025/(0545 to 0612) GMT
31-05-2025/(1115 to 1142) IST

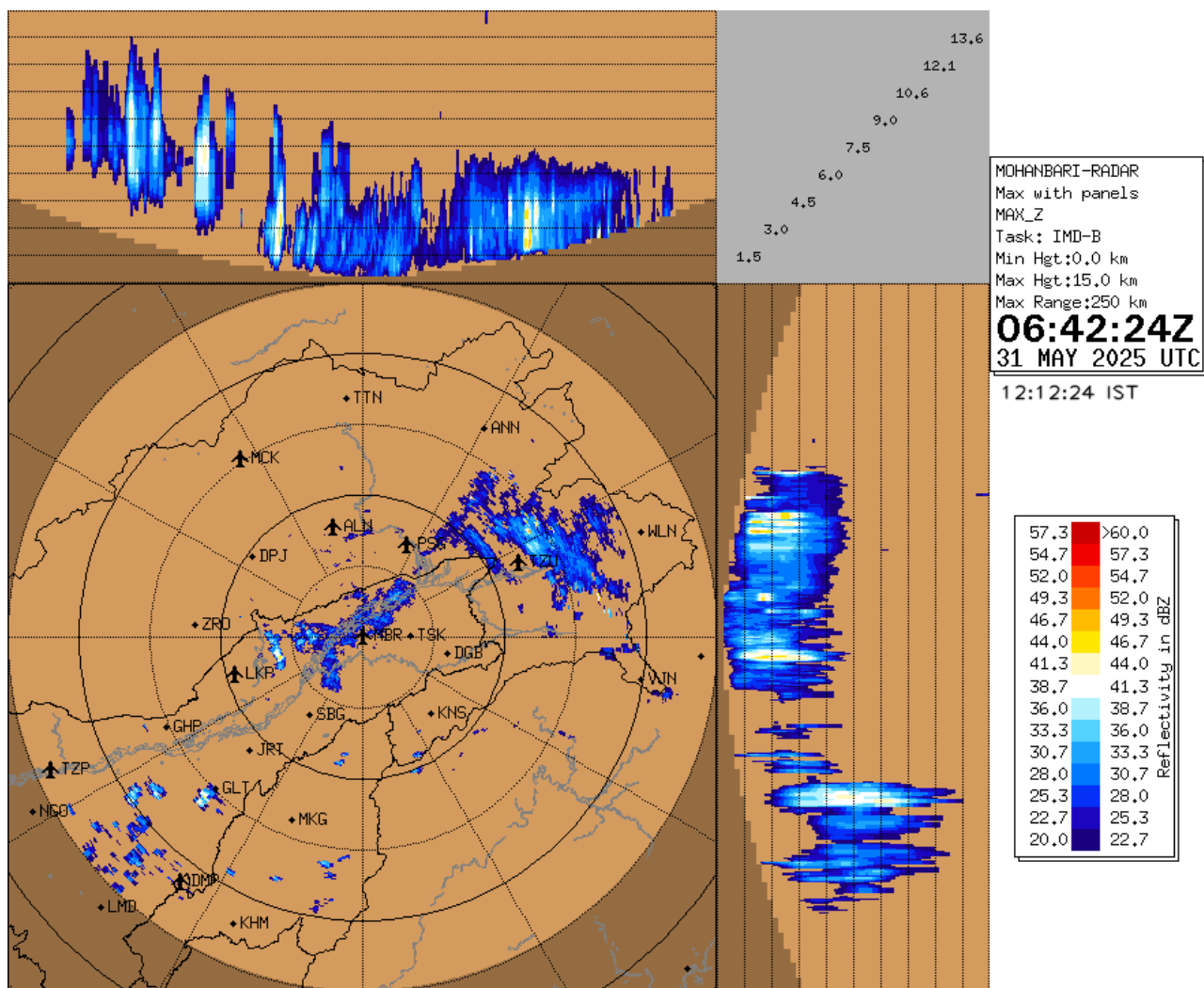


Contact: Cyclone Warning Division, Office of the Director General of Meteorology, India Meteorological Department, Ministry of Earth Sciences.

E-mail: cyclonewarningdivision@gmail.com, Website: smcnewdelhi.imd.gov.in

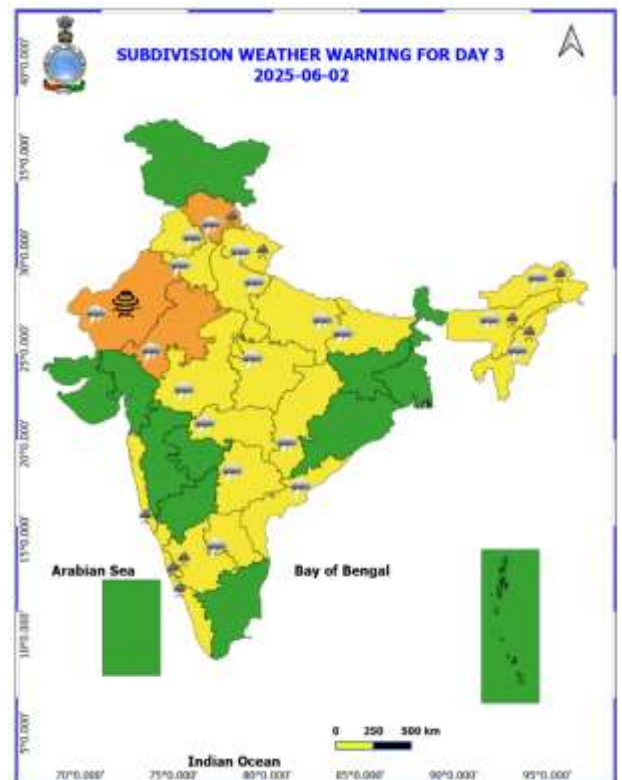
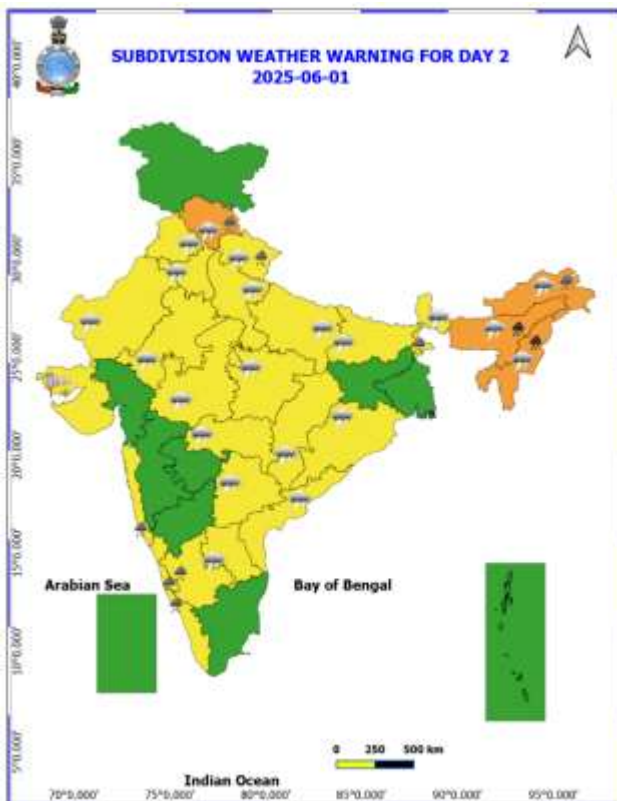
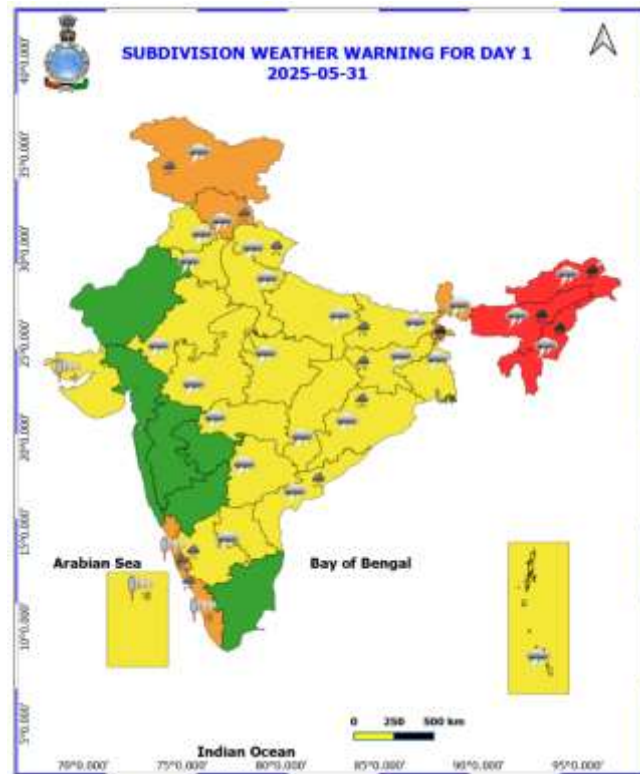
Spatial rainfall distribution: Isolated: <25%, A few: 26-50%, Many: 51-75%, Most: 76-100%

Rainfall amount (mm): Heavy rain: 64.5 – 115.5, Very heavy rain: 115.6 – 204.4, Extremely heavy rain: 204.5 or more.



Maximum Reflectivity (dBZ) Observation by Doppler Weather Radar (DWR) at Mohanbari

Multi-hazard warning maps

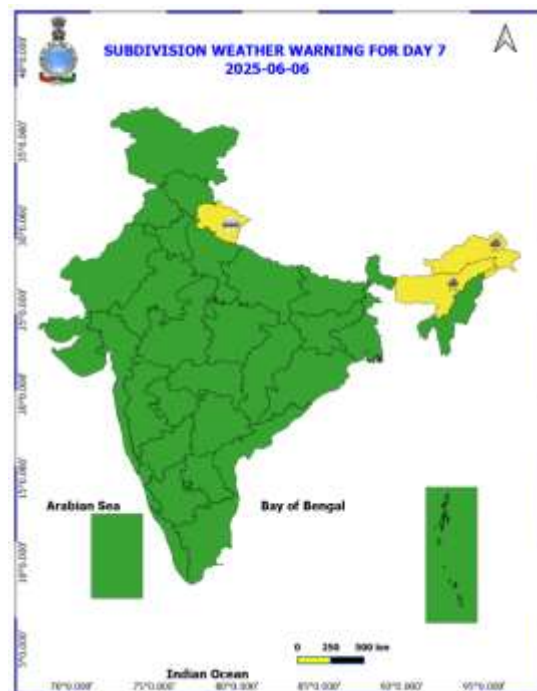
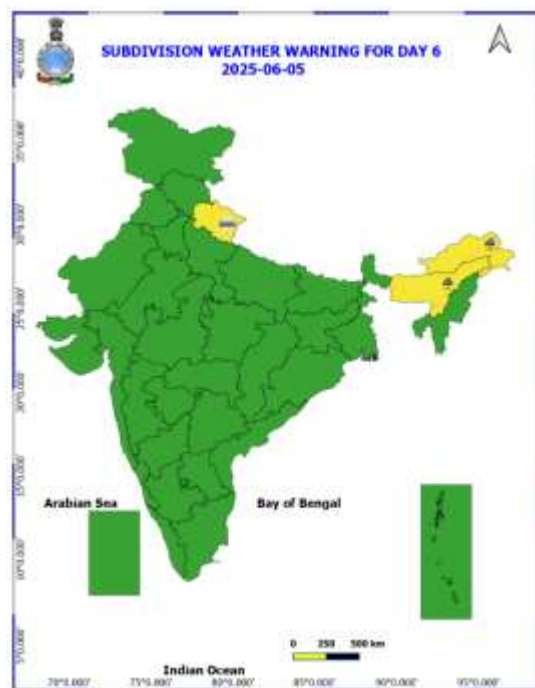
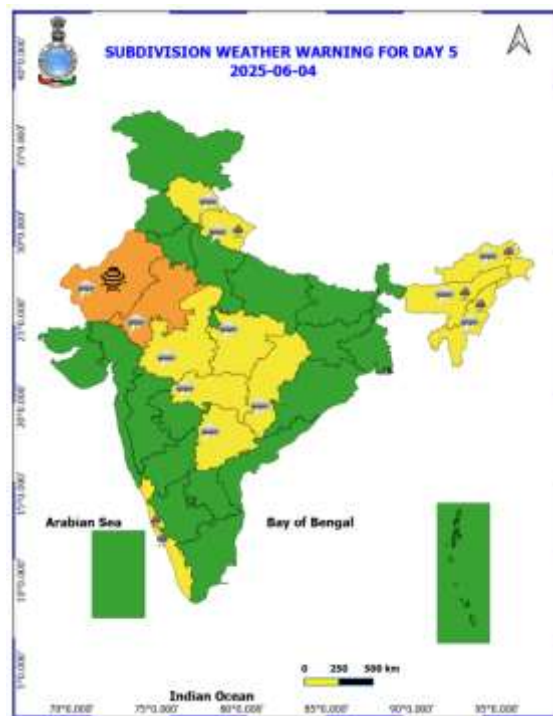
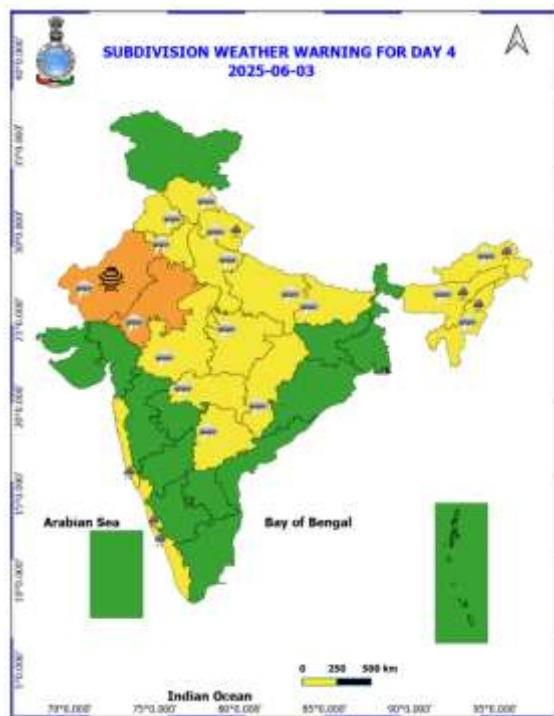


Contact: Cyclone Warning Division, Office of the Director General of Meteorology, India Meteorological Department, Ministry of Earth Sciences.

E-mail: cyclonewarningdivision@gmail.com, Website: smcnnewdelhi.imd.gov.in

Spatial rainfall distribution: Isolated: <25%, A few: 26-50%, Many: 51-75%, Most: 76-100%

Rainfall amount (mm): Heavy rain: 64.5 – 115.5, Very heavy rain: 115.6 – 204.4, Extremely heavy rain: 204.5 or more.



Contact: Cyclone Warning Division, Office of the Director General of Meteorology, India Meteorological Department, Ministry of Earth Sciences.
E-mail: cyclonewarningdivision@gmail.com, Website: rsmcnewdelhi.imd.gov.in
Spatial rainfall distribution: Isolated: <25%, A few: 26-50%, Many: 51-75%, Most: 76-100%
Rainfall amount (mm): Heavy rain: 64.5 – 115.5, Very heavy rain: 115.6 – 204.4, Extremely heavy rain: 204.5 or more.

Persistent Flash Flood Threat (PFFT) till 1730 IST of 31-05-2025 :

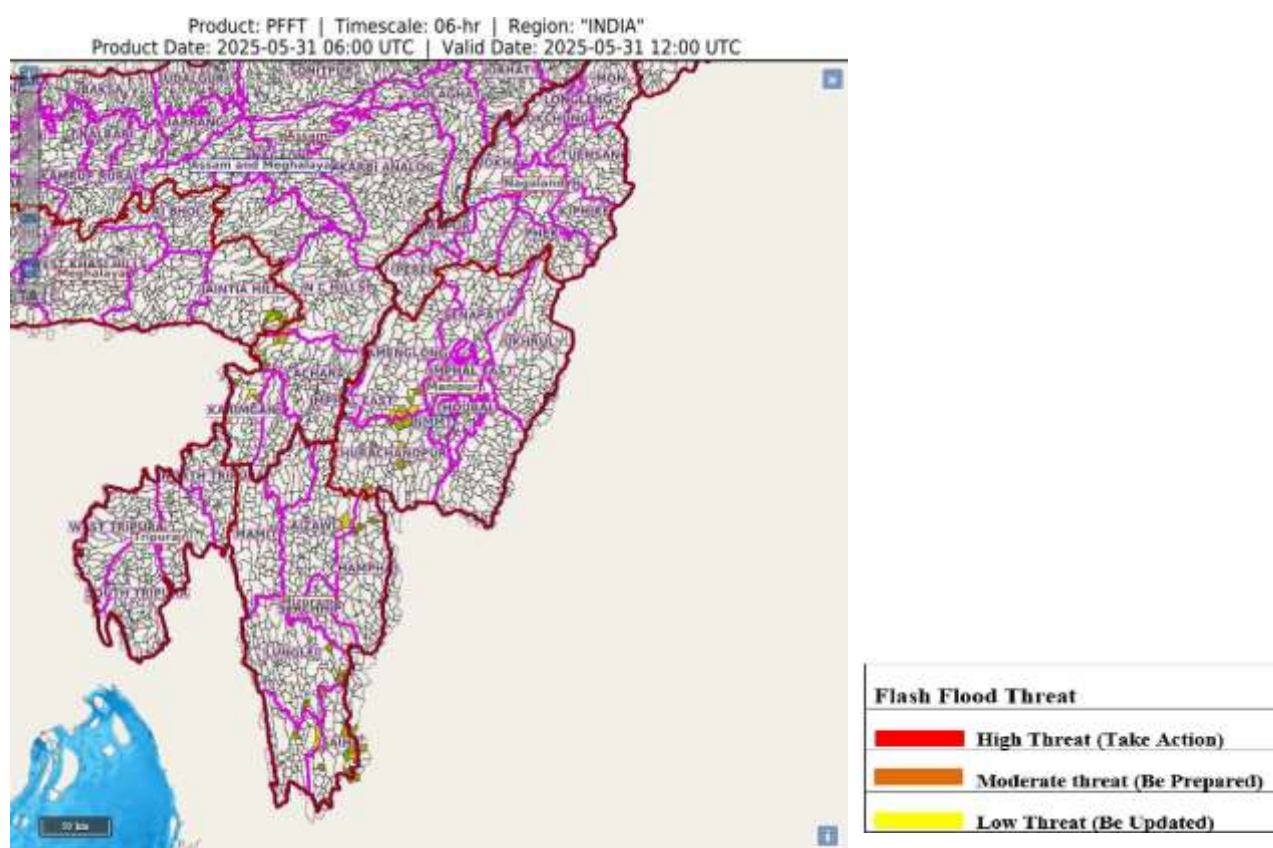
Low flash flood threat likely over few watersheds & neighbourhoods of following Met Sub-divisions during next 6 hours.

Nagaland Mizoram Manipur Tripura (NMMT) –

Manipur- Churachandpur, Tamenglong districts.

Mizoram- Aizawl, Champhai, Lawngtlai, Lunglei and Saiha districts.

Surface runoff/ Inundation may occur at some fully saturated soils & low-lying areas over Area of Concern (AoC) as shown in map due to expected rainfall occurrence in next 6 hours.



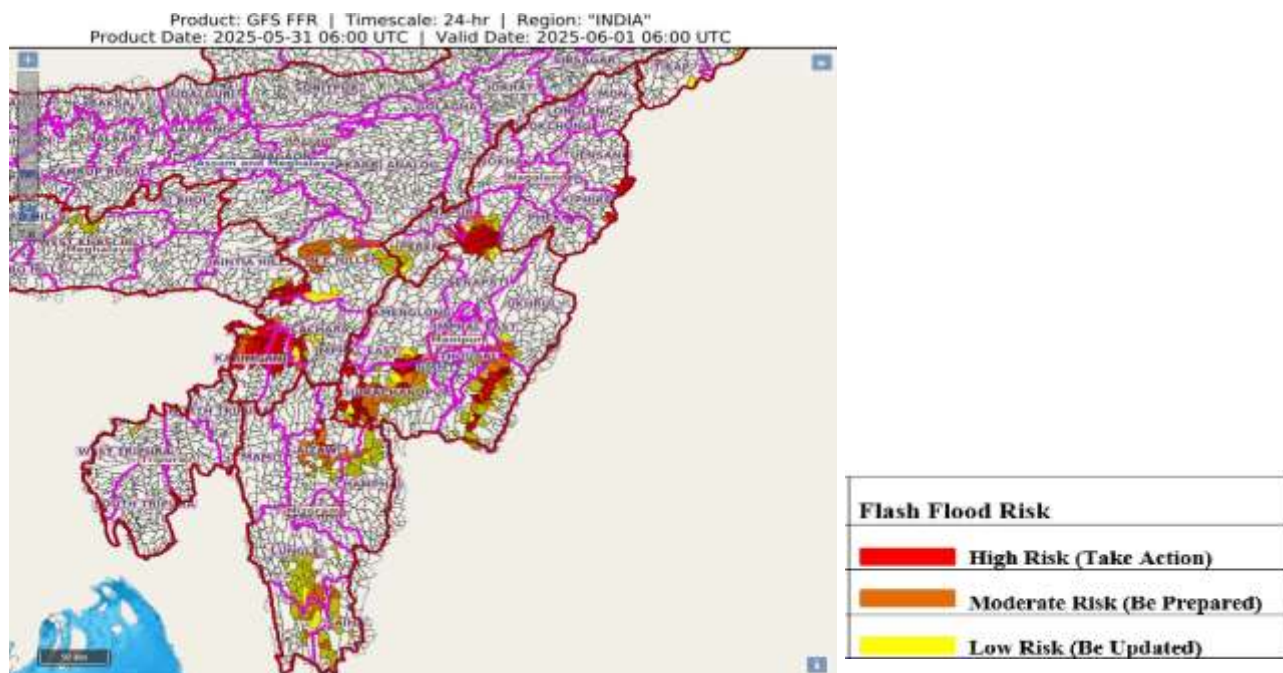
Contact: Cyclone Warning Division, Office of the Director General of Meteorology, India Meteorological Department, Ministry of Earth Sciences.

E-mail: cyclonewarningdivision@gmail.com, Website: smcnewdelhi.imd.gov.in

Spatial rainfall distribution: Isolated: <25%, A few: 26-50%, Many: 51-75%, Most: 76-100%

Rainfall amount (mm): Heavy rain: 64.5 – 115.5, Very heavy rain: 115.6 – 204.4, Extremely heavy rain: 204.5 or more.

24 hours Outlook for the Flash Flood Risk (FFR) till 1130 IST of 01-06-2025 :



Low flash flood risk likely over few watersheds & neighbourhoods of following Met Sub-divisions during next 24 hours. **Nagaland Mizoram Manipur Tripura (NMMT) –**

Manipur- Chandel, Churachandpur, Senapati, Tamenglong, Ukhrul districts.

Mizoram- Aizawl, Champhai, Lawngtlai, Lunglei, Saiha, Serchhip districts.

Nagaland- Dimapur, Kiphire, Kohima, Peren and Tuensang districts.

Surface runoff/ Inundation may occur at some fully saturated soils & low-lying areas over Area of Concern (AoC) as shown in map due to expected rainfall occurrence in next 24 hours.

Fishermen Warning Graphics

